

Proposal for the Trees for Tribs Planting Rhinebeck Highway Department - Landsman Kill Creek



Legend

- ▭ Priority Planting Area
- ▭ Tax Parcel Rhinebeck Highway Garage
- ▭ Secondary Planting Area

0 50 100 200 Feet



Map Created 2021

Approximate Planting Area

Event Details:

- **Date:** Plant Delivery- April 29, 2021 @ 2pm
- **Minimum number of recommended volunteer hours:** 40-60
- **Planting prep:**
 - Outline the planting boundary with white spray paint and submit dig safe request 10 days before planting.
 - Pre dig holes every 5-10ft (1 ft deep by about 1.5 ft wide).
 - Control/remove invasive plants, as needed.
 - Create a physical barrier to outline the planting zones (e.g. set up large rocks, or to install bright orange fencing).

Proposed Planting Area Description:

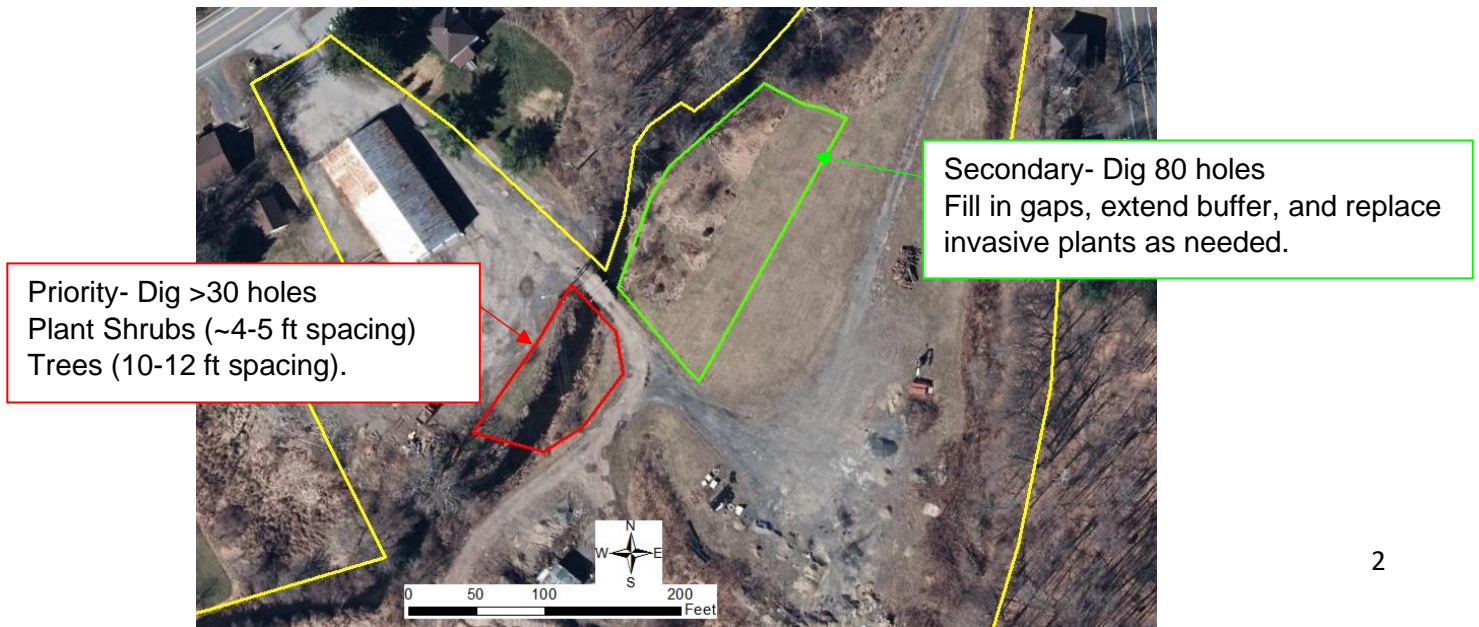
The proposed planting area is directly along the Landsman Kill Creek. Directly behind the Village of Rhinebeck Highway Garage, the priority area has a power line crossing the creek (see Image 1 on page 5).

The secondary area, east of the bridge, has existing woody vegetation from a previous Trees for Tribes planting in 2008. There are currently three walking paths being mowed access to the creek (see Image 2 on page 5).

- **Sun Exposure:** Full Sun to Part Shade
- **Wetness:** Moist with occasional flooding
- **Existing native woody plants:** Sycamore, River Birch, Red maples, Dogwoods, few existing understory trees/shrubs.
- **Approximate Length Along Stream:** 430 ft.

Planting Recommendation:

- Establish the desired planting boundaries on the ground before you begin planting. We recommend that a physical barrier is erected in order to prevent the planting from being mowed down, or damaged.
- Plant the priority area plant ~125ft from the bridge to the west on both sites of stream.
 - Plant as many shrubs as you can in this area by planting shrubs ~4-5 feet apart from each other and ~8-9 feet apart from established native plants. (e.g. *We estimate that this will use ~20 shrubs*)
 - Plant as many trees as you can in this area by planting trees ~10-12 feet apart from each other and from established native trees. Avoid planting trees within 15 feet of the powerlines. (e.g. *We estimate that this will use ~10 trees*).
 - After establishing coverage in the open areas, replace invasive plants and fill in all gaps between existing native trees and shrubs as needed.
 - Plant the remaining trees and shrubs in the secondary area.
- In the secondary area, our recommendation is to plant the remaining species and:
 - Minimize the area of mowed path by planting trees and shrubs, reshaping the existing paths to be narrower.
 - Extend the existing buffer to be as wide as possible.
 - Fill in gaps and replace invasive species as needed.



Proposed Plant List:

Trees and shrubs were selected for this site based on our spring plant availability and for their ability to grow in full sun or partial shade, in compacted salty soils, and tolerance for periodic flooding. The following are the plant species we have tentatively reserved for this site. Please let us know if you would like to see changes.

Planting Proposal Summary:

- **Total Plants:** 110
 - **Trees:** 25
 - **Shrubs:** 85

Recommended Plant Species:

Trees: (25)

Following guidance from Central Hudson indicated tree species should be planted either 10ft or 45ft away from outermost primary line powerline:

Plant 10ft from powerline

- 2 Flowering Dogwood (*Cornus florida*)^{SHADE}

Plant 45ft from powerline

- 4 Red Maple (*Acer rubrum*) *
- 4 River Birch (*Betula nigra*)
- 2 Hackberry (*Celtis occidentalis*) *
- 4 Black Walnut (*Juglans nigra*)
- 5 Red Cedar (*Juniperus virginiana*)
- 2 Tulip (*Liriodendron tulipifera*)
- 2 Swamp White Oak (*Quercus bicolor*)

Shrubs: (85)

Plant 10ft from powerline

- 5 Buttonbush (*Cephalanthus occidentalis*)
- 10 Silky Dogwood (*Cornus amomum*)
- 5 Gray Dogwood (*Cornus racemosa*)
- 10 Red-Osier Dogwood (*Cornus sericea*)
- 5 Witchhazel (*Hamamelis virginiana*) * , SHADE
- 5 Winterberry (*Ilex verticillata*)
- 5 Black Chokeberry (*Photinia Melanocarpa (Aronia)*) * , SHADE
- 5 Swamp Rose (*Rosa palustris*) * , SHADE
- 5 Virginia Rose (*Rosa virginiana*) * , SHADE
- 10 Pussy Willow (*Salix discolor*) *
- 5 Prairie Willow (*Salix humilis*)
- 10 Sandbar Willow (*Salix interior*) *
- 5 Arrowwood (*Viburnum dentatum*)*

*Salt Tolerant

^{SHADE} Shade Tolerant

Materials:

Plant protection:

We recommend that all trees and shrubs be protected from deer and other animal damage.

- We can provide Tree tubes, with stakes for all trees and shrubs.
- We can provide weed mats, with staples for installation for all plants.
- We can provide 1 No Mow sign.
- We can provide 1 Trees for Tribes sign – Please post the sign on the property.

Refer to planting guide for more details on planting and installation:

https://www.dec.ny.gov/docs/remediation_hudson_pdf/hrewplant16.pdf

Here is a link to our planting demonstration video that you can begin circulating among your volunteers:

<https://www.dropbox.com/s/vl9wuq3mjs7mlfw/TREES%20FOR%20TRIBES%20TUTORIAL.mp4?dl=0>

Regular Maintenance After Planting:

Maintenance of your Trees for Tribes is essential to assure the long-term success of your plants and the overall strength of your new stream buffer. Plan to spend time each month of the first few years caring for your new trees and shrubs to ensure their successful establishment.

Please see our Maintenance Guide and Calendar for step-by-step instructions:

- Maintenance Guide: www.dec.ny.gov/docs/remediation_hudson_pdf/hrewcare16.pdf
- Maintenance Calendar: www.dec.ny.gov/docs/lands_forests_pdf/tftcalchecklist.pdf

Invasive Control Guides:

We recommend that you watch for invasive plants and control them, at least to the extent that they interfere with the growth of your new native seedlings. During the site visit we saw the following invasive plants:

- Multiflora rose
- Phragmites
- Japanese Knotweed (on South side of creek in Priority Area)
- Chinese Privet
- Tree of Heaven

Invasive Management -

<http://lhprism.org/system/files/documents/Hudsonia%20BMPs%20Invasive%20Plants%20with%20Appendix%200.pdf>

Event Contact

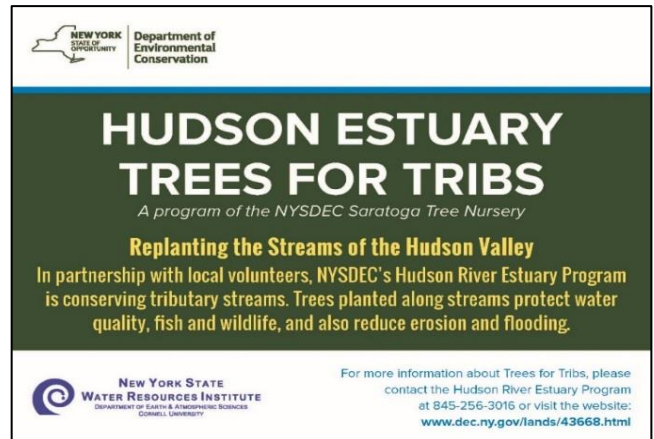
Name: Zak Kircher
Phone: (908) 547-7034
E-mail: zachary.kircher1@marist.edu

Post Planting/ Maintenance Contact

Name: Scott Minn
Phone: (845) 876-4284; (845) 430-7860
E-mail: Highway@villageofrhinbeckny.gov

Trees for Tribs Contact

Anna Palmer, Stream Buffer Coordinator
Hudson River Estuary Program,
NYS DEC
Phone: (C) (845) 721-5221
(W) (845)256-3875
Email: HudsonEstuaryTFT@dec.ny.gov



Trees for Tribs sign (actual size is 9in x 12in)

Site Visit Pictures



Image 1. Priority Area- Notice power lines. Do not plant anything within 10 ft of powerline.



Image 2. Secondary Planting Area- Minimize the amount of mowed path.

Supplemental Material (Provided by Richard Feldmen)

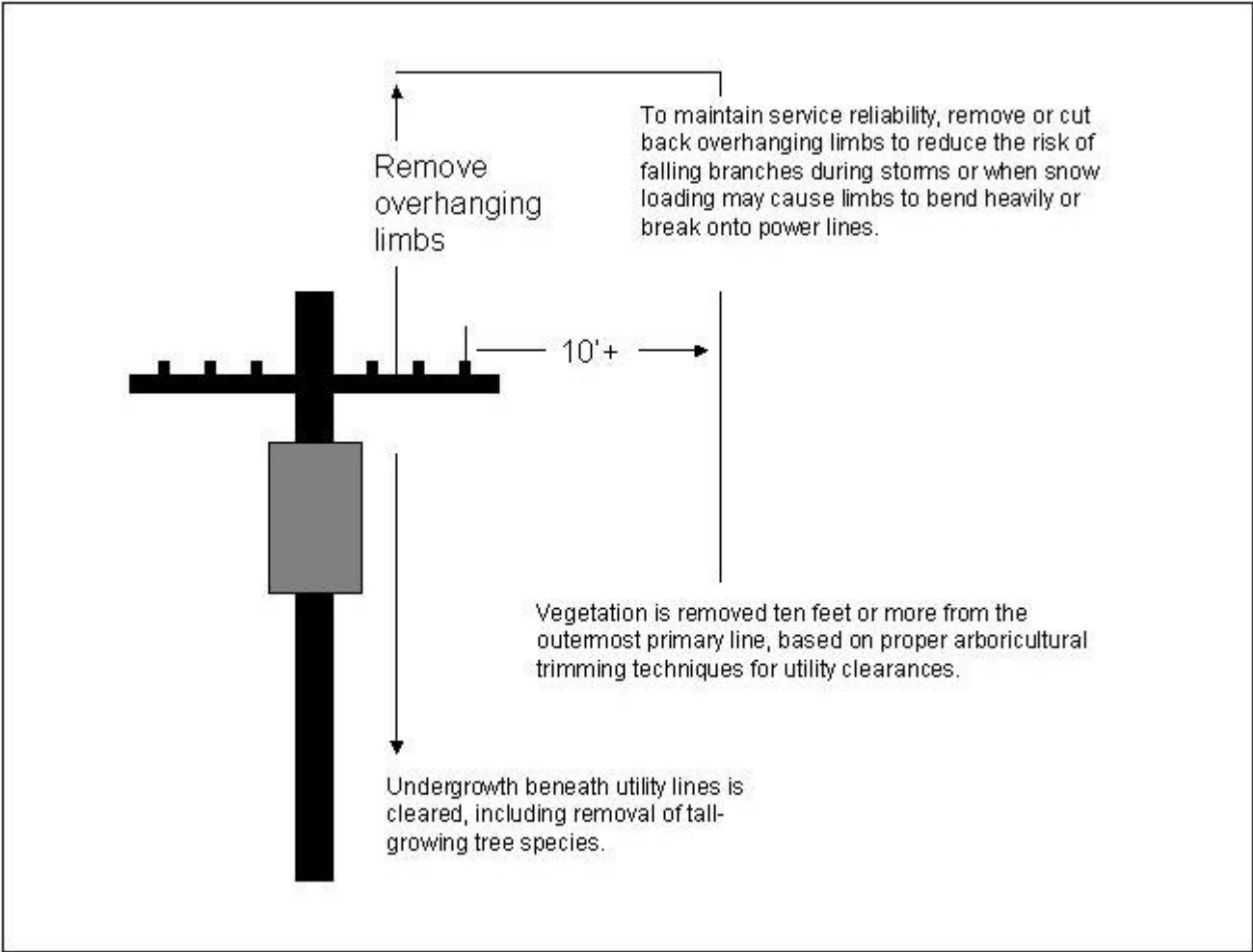


Image 3. Central Hudson Tree Trimming Chart